



# 检测报告 Test Report

报告编号 ECL03I005687E  
Report No. ECL03I005687E

第1页 共6页  
Page 1 of 6

**申请单位** 乐清市人禾电子有限公司  
**Applicant** YUEQING RHI ELECTRIC CO.,LTD  
**地址** 浙江省乐清市北白象镇大桥工业区雁荡山路  
**Address** YANDANG MOUNTAIN ROAD WENZHOU BRIDGE INDUSTRIAL ZONE,  
YUEQING CITY ZHEJIANG, CHINA.

以下测试之样品及样品信息由申请者提供并确认

The following sample(s) and sample information was/were submitted and identified by/on the behalf of the client

样品编号 Sample No.	样品名称 Sample Name	样品颜色 Sample Color
1	PVC Protection Cover	红色、绿色、黑色 red、green、black
2		深蓝色、浅蓝透明 Dark blue、Shallow blue, transparent
3		白色、无色透明、黄色 white、Colorless transparent、yellow

样品接收日期 2016.11.11  
Sample Received Date Nov. 11, 2016  
样品检测日期 2016.11.11-2016.11.14  
Testing Period Nov. 11, 2016 to Nov. 14, 2016

检测要求/检测依据/检测结果 请参见下页。  
Test Requested/Test Method/Test Result(s) Please refer to the following page(s).

主 检  
Tested by

审 核  
Reviewed by

Approved by

日 期  
Date

2016.11.14



授权签字人 Approved Signatory

No. R138201071

宁波高新区菁华路 76 号厂区东首第一、二层

Centre Testing International (Ningbo) Co.,Ltd. 1-2F, Eastern Factory, No.76, Jinghua Road, High-Tech Zone, Ningbo, Zhejiang, China

# 检测报告

## Test Report

报告编号 ECL03I005687E  
Report No. ECL03I005687E  
检测要求

第2页 共6页  
Page 2 of 6

### Test Requested

根据客户要求，对所提交样品中的铅(Pb)，镉(Cd)，汞(Hg)，六价铬(Cr(VI))，多溴联苯(PBBs)，多溴二苯醚(PBDEs)进行测试。

As specified by client, to test Lead(Pb), Cadmium(Cd), Mercury(Hg), Hexavalent Chromium(Cr(VI)), Polybrominated Biphenyls(PBBs), Polybrominated Diphenyl Ethers(PBDEs) in the submitted sample(s).

### 检测依据 Test Method

测试项目 Tested Item(s)	测试方法 Test Method	测试仪器 Measured Equipment(s)
铅 Lead (Pb)	IEC 62321-5:2013 Ed.1.0	ICP-OES
镉 Cadmium (Cd)	IEC 62321-5:2013 Ed.1.0	ICP-OES
汞 Mercury (Hg)	IEC 62321-4:2013 Ed.1.0	ICP-OES
六价铬 Hexavalent Chromium (Cr(VI))	IEC 62321-7-1:2015	UV-Vis
	IEC 62321:2008 Ed.1 Annex C	
多溴联苯(PBBs) Polybrominated Biphenyls (PBBs)	IEC 62321-6:2015	GC-MS
多溴二苯醚(PBDEs) Polybrominated Diphenyl Ethers (PBDEs)	IEC 62321-6:2015	GC-MS

### 检测结果 Test Result(s)

测试项目 Tested Item(s)	结果 Result			方法检出限 MDL	2011/65/EU 指令限值 <sup>▽1</sup> Limit of Directive 2011/65/EU <sup>▽1</sup>
	1	2	3		
铅 Lead (Pb)	N.D.	N.D.	N.D.	2 mg/kg	1000 mg/kg
镉 Cadmium (Cd)	N.D.	N.D.	N.D.	2 mg/kg	100 mg/kg
汞 Mercury (Hg)	N.D.	N.D.	N.D.	2 mg/kg	1000 mg/kg
六价铬 Hexavalent Chromium (Cr(VI))	N.D.	N.D.	N.D.	2 mg/kg	1000 mg/kg

# 检测报告

## Test Report

报告编号 ECL03I005687E  
Report No. ECL03I005687E

第3页 共6页  
Page 3 of 6

测试项目 Tested Item(s)	结果 Result			方法 检出限 MDL	2011/65/EU 指令限值 <sup>▽1</sup> Limit of Directive 2011/65/EU <sup>▽1</sup>
	1	2	3		
<b>多溴联苯 Polybrominated Biphenyls(PBBs)</b>					
一溴联苯 Monobromobiphenyl	N.D.	N.D.	N.D.	5 mg/kg	1000 mg/kg
二溴联苯 Dibromobiphenyl	N.D.	N.D.	N.D.	5 mg/kg	
三溴联苯 Tribromobiphenyl	N.D.	N.D.	N.D.	5 mg/kg	
四溴联苯 Tetrabromobiphenyl	N.D.	N.D.	N.D.	5 mg/kg	
五溴联苯 Pentabromobiphenyl	N.D.	N.D.	N.D.	5 mg/kg	
六溴联苯 Hexabromobiphenyl	N.D.	N.D.	N.D.	5 mg/kg	
七溴联苯 Heptabromobiphenyl	N.D.	N.D.	N.D.	5 mg/kg	
八溴联苯 Octabromobiphenyl	N.D.	N.D.	N.D.	5 mg/kg	
九溴联苯 Nonabromobiphenyl	N.D.	N.D.	N.D.	5 mg/kg	
十溴联苯 Decabromobiphenyl	N.D.	N.D.	N.D.	5 mg/kg	
<b>多溴二苯醚 Polybrominated Diphenyl Ethers(PBDEs)</b>					
一溴二苯醚 Monobromodiphenyl ether	N.D.	N.D.	N.D.	5 mg/kg	1000 mg/kg
二溴二苯醚 Dibromodiphenyl ether	N.D.	N.D.	N.D.	5 mg/kg	
三溴二苯醚 Tribromodiphenyl ether	N.D.	N.D.	N.D.	5 mg/kg	
四溴二苯醚 Tetrabromodiphenyl ether	N.D.	N.D.	N.D.	5 mg/kg	
五溴二苯醚 Pentabromodiphenyl ether	N.D.	N.D.	N.D.	5 mg/kg	
六溴二苯醚 Hexabromodiphenyl ether	N.D.	N.D.	N.D.	5 mg/kg	
七溴二苯醚 Heptabromodiphenyl ether	N.D.	N.D.	N.D.	5 mg/kg	
八溴二苯醚 Octabromodiphenyl ether	N.D.	N.D.	N.D.	5 mg/kg	
九溴二苯醚 Nonabromodiphenyl ether	N.D.	N.D.	N.D.	5 mg/kg	
十溴二苯醚 Decabromodiphenyl ether	N.D.	N.D.	N.D.	5 mg/kg	

# 检测报告 Test Report

报告编号 ECL03I005687E  
Report No. ECL03I005687E  
测试样品/部位描述

第4页 共6页  
Page 4 of 6

## Tested Sample/Part Description

- |   |  |
|---|--|
| 1 | 混测,绿色塑胶,红色塑胶和黑色塑胶 <sup>∇2</sup><br>Mixed test,green plastic,red plastic and black plastic <sup>∇2</sup>              |
| 2 | 混测,淡蓝色塑胶,蓝色塑胶和深蓝色塑胶 <sup>∇2</sup><br>Mixed test,light blue plastic, blue plastic and dark blue plastic <sup>∇2</sup> |
| 3 | 混测,无色透明塑胶,白色塑胶和黄色塑胶 <sup>∇2</sup><br>Mixed test,light blue plastic, blue plastic and dark blue plastic <sup>∇2</sup> |

**备注:** 对于检测铅, 镉, 汞之样品已完全溶解。  
<sup>∇2</sup>=根据客户要求, 对样品进行混合测试, 测试结果不代表混合测试中任何一种单一材质的含量。

- N.D. = 未检出 (小于方法检出限)

-mg/kg = ppm = 百万分之一

<sup>∇1</sup>=指令限值针对均质材料。

**Remark:** The sample(s) had been dissolved totally tested for Lead, Cadmium, Mercury.  
<sup>∇2</sup>=As specified by client, the test was conducted by mixing several samples together.The result(s) shown on this report may be different from the content of any homogeneous material.

-MDL = Method Detection Limit

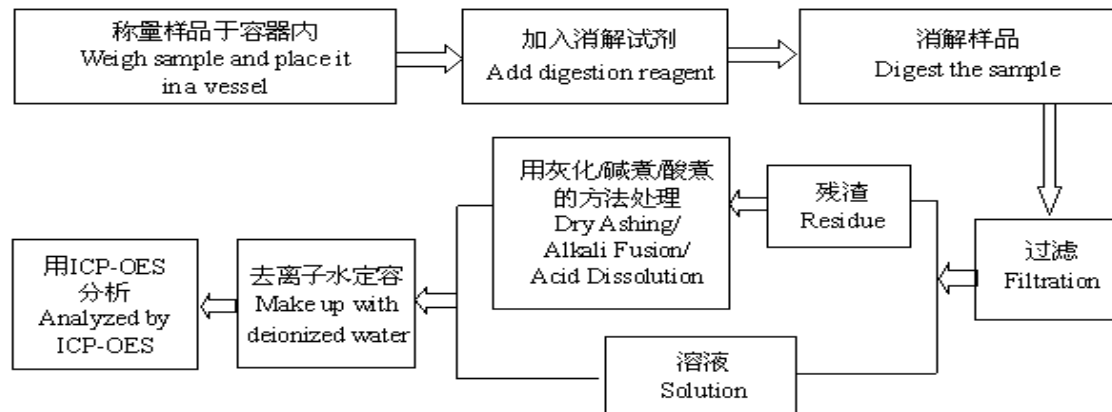
-N.D. = Not Detected (<MDL)

-mg/kg = ppm = parts per million

<sup>∇1</sup>= The directive limits are for homogeneous materials.

## 检测流程 Test Process

### 1. 铅/镉 Pb/Cd



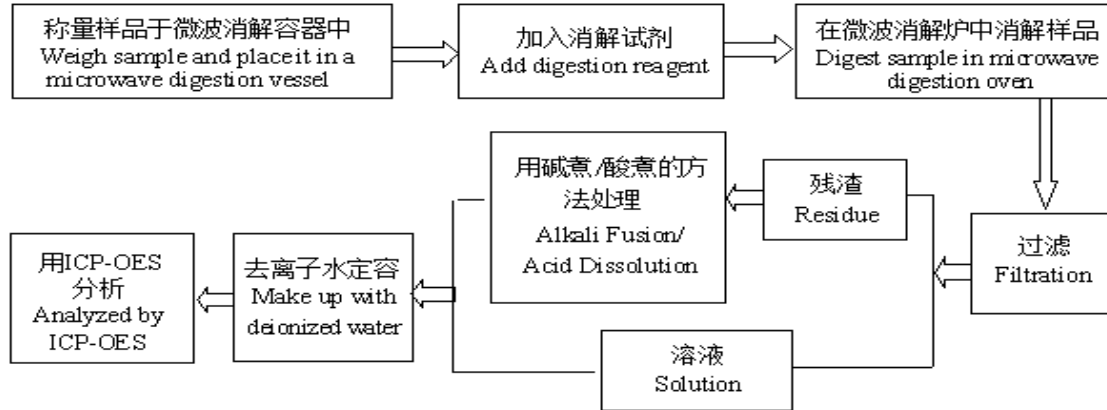


# 检测报告 Test Report

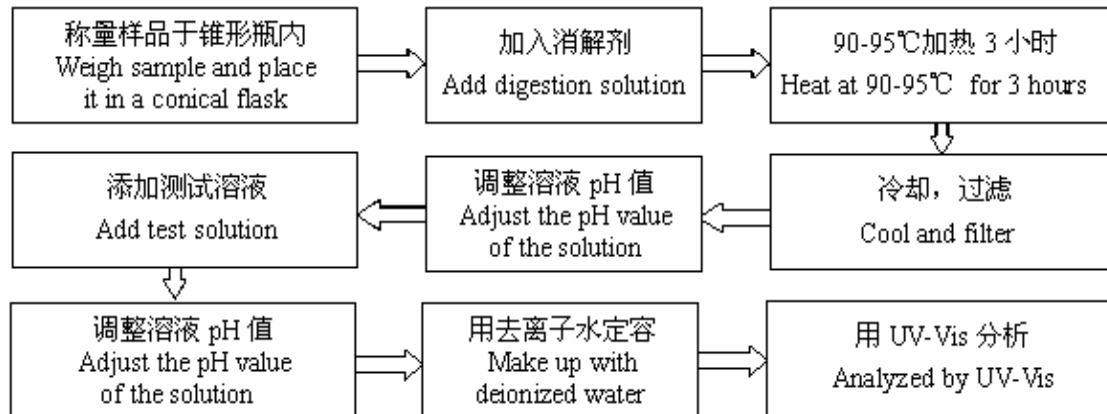
报告编号 ECL03I005687E  
Report No. ECL03I005687E

第5页 共6页  
Page 5 of 6

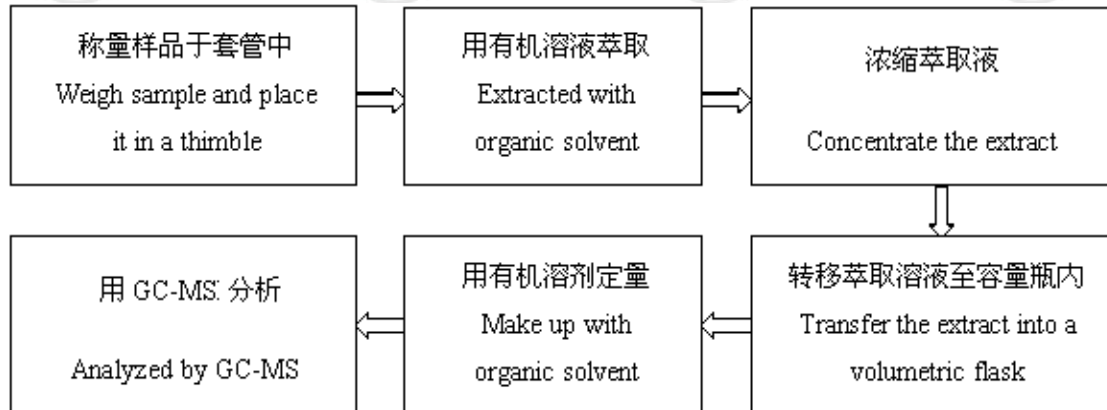
## 2.汞 Hg



## 3.六价铬 Chromium(VI)



## 4.多溴联苯/多溴二苯醚 PBBs/PBDEs



# 检测报告

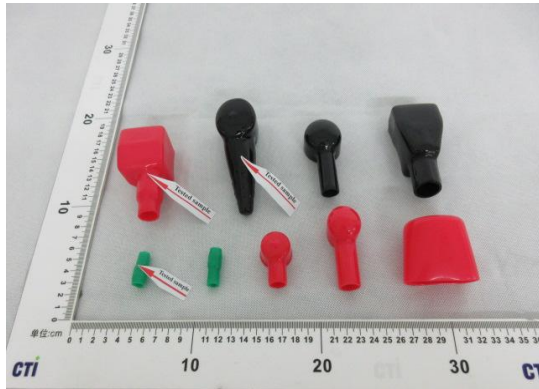
## Test Report

报告编号 ECL03I005687E  
Report No. ECL03I005687E

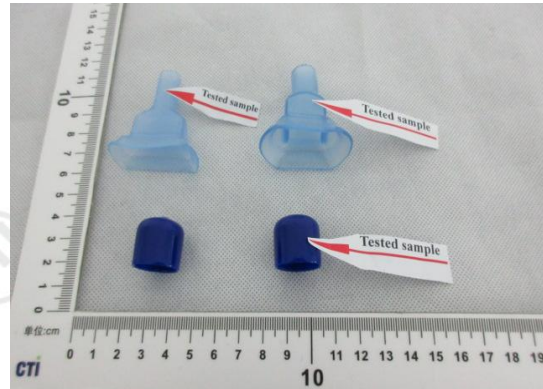
第6页 共6页  
Page 6 of 6

### 样品图片

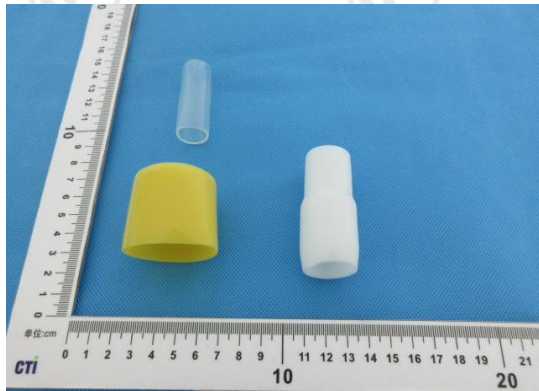
### Photo(s) of the sample(s)



1



2



3

\*\*\* 报告结束 \*\*\*  
\*\*\* End of Report \*\*\*

检测报告无批准人签字及加盖公司报告章无效,本报告检测结果仅对受测样品负责。未经CTI书面同意,不得部分复制本报告。

The test report is effective only with both signature and specialized stamp. The result(s) shown in this report refer only to the sample(s) tested. Without written approval of CTI, this report can't be reproduced except in full.